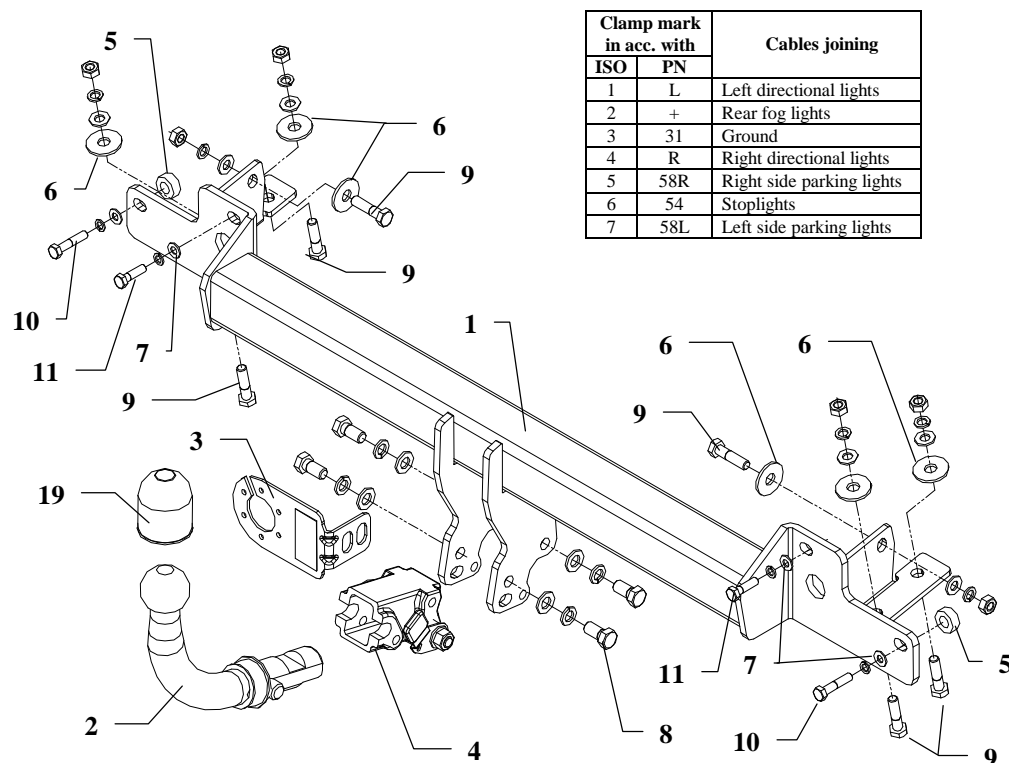
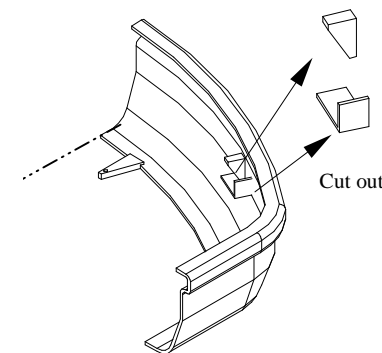
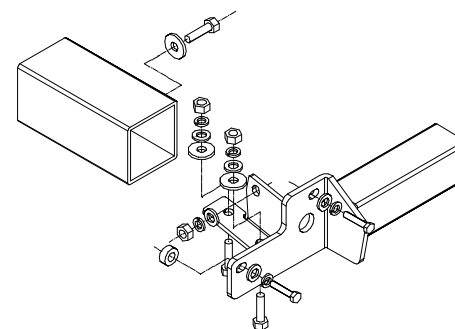


## FITTING INSTRUCTION



Clamp mark in acc. with		Cables joining
ISO	PN	
1	L	Left directional lights
2	+	Rear fog lights
3	31	Ground
4	R	Right directional lights
5	58R	Right side parking lights
6	54	Stoplights
7	58L	Left side parking lights



Dwg. 2 Bumpers – cut outs

- Mount the bumper after cut out his fragments see dwg. no. 2.
- Fix body of the automat (pos. 4) and the socket plate (pos. 3) using bolts M12x25mm (pos. 8) from accessories. Place tow-ball (pos. 2) according to supplied instruction.
- Tighten all bolts according to the torque shown in the table.
- Connect electric wires of 7-poles socket according to the instruction of the car. (Recommend to make at authorized service station)
- Complete paint layer damaged during installation.

This towbar is designed to assembly in following cars:

**TOYOTA COROLLA 4-5 door (E 11)** produced since 07.1997 till 07.2001, catalogue no. **O08A** and is prepared to tow trailers max total weight **1200 kg** and max vertical load **75 kg**.

*The towbar should be install in points described by a car producer.*

### Fitting instructions

- Disassemble the bumper.
- Unscrew original tow eyes (will be not used any more)
- Unscrew metal covers of chassis members (will not used any more)
- Slip main bar of the towbar (pos. 1) to chassis members and fix it by bolts from towbar accessories according to drawing.

Torque settings for nuts and bolts (8,8):

<b>M8</b>	25 Nm	<b>M10</b>	55 Nm
<b>M12</b>	85 Nm	<b>M14</b>	135 Nm

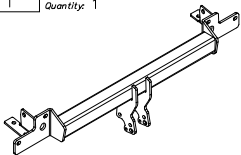
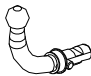
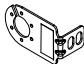

### NOTE

After install the towbar you should get adequate note in registration book (at authorised service station).The car should be equipped with:

- Indicators
- Tow mirrors

After 1000km check all bolts and nuts. The ball of towbar must be always kept clear and conserve with a grease.

## Towbar accessories:

Pos. 1	Name: Main bar Quantity: 1	Pos. 5	Name: Distance sleeve Quantity: 2 Dim.: Ø25xØ13x10mm	Pos. 10	Name: Bolt 8,8 B Quantity: 2 Dim.: M8x40mm	Pos. 15	Name: Plain washer Quantity: 6 Dim.: Ø 10,5 mm
		Pos. 6	Name: Washer Quantity: 2 Dim.: Ø42xØ13x3mm	Pos. 11	Name: Bolt 8,8 B Quantity: 2 Dim.: M8x30mm	Pos. 16	Name: Spring washer Quantity: 4 Dim.: Ø 12,2 mm
Pos. 2	Name: Tow ball Quantity: 1	Pos. 7	Name: Washer Quantity: 4 Dim.: Ø25xØ9x2mm	Pos. 12	Name: Body plug Quantity: 1	Pos. 17	Name: Spring washer Quantity: 6 Dim.: Ø 10,2 mm
		Pos. 8	Name: Bolt 8,8 B Quantity: 4 Dim.: M12x25mm	Pos. 13	Name: Nut 8 B Quantity: 6 Dim.: M10	Pos. 18	Name: Spring washer Quantity: 4 Dim.: Ø 8,2 mm
Pos. 3	Name: Socket plate Quantity: 1	Pos. 9	Name: Bolt 8,8 B Quantity: 6 Dim.: M10x40mm	Pos. 14	Name: Plain washer Quantity: 4 Dim.: Ø 13 mm	Pos. 19	Name: Ball cover Quantity: 1
		Pos. 4	Name: Body of the automa Quantity: 1				
							



**PPUH AUTO-HAK S.J.**

Produkcja Haków Holowniczych  
Henryk & Zbigniew Nejman  
76-200 SŁUPSK ul. Słoneczna 16K  
tel/fax (059) 8-414-414; 8-414-413  
e-mail: [office@autohak.com.pl](mailto:office@autohak.com.pl)  
[www.autohak.com.pl](http://www.autohak.com.pl)

## Towing hitch (without electrical set)

Class: **A50-X** Cat. no. **O08A**

Designed for:

Manufacturer: **TOYOTA**

Model: **COROLLA 4-5 doors**

Type: **E11**

produced since 07.1997 till 07.2001

Technical data:

**D-value: 7,1 kN**

maximum trailer weight: **1200 kg**

maximum vertical cup load: **75 kg**

**Approval number according to Directive 94/20/EC: e20\*94/20\*0243\*00**

## Foreword

This towbar is design according to rules of safety traffic regulations. The towing hitch is a safety component and must be installed only by qualified personnel. Any alteration or conversion to the towing hitch is prohibited and would lead to cancellation of design certification. Remove insulating compound and underseal from vehicle (if present) in the area of the matting surfaces of the towing hitch. The vehicle manufacturer's specifications regarding trailer load and max. vertical cup load are decisive for driving, and values for the towing hitch cannot be exceeded.

*D-value formula:*

$$\frac{\text{Max trailer weight [kg]} \times \text{Max vehicle weight [kg]}}{\text{Max trailer weight [kg]} + \text{Max vehicle weight [kg]}} \times \frac{9,81}{1000} = D \text{ [kN]}$$